

Task Report

Machine: GE1

Test Date: 15 AUG 2014

Task Name: CT (2)

Status: Warning: Review Needed

Requestor: Admin, IDD

Details

Phantom: Gammex 464

Approved By

N/A

Task Results

Test	Measurement	Results		Status	Tolerance
		Baseline	Difference		
Low Contrast (mm)	2	2	0	Passed	
Slice Thickness - A (mm)	5	5.0	0.0	Passed	
Slice Thickness - B (mm)	5	5.0	0.0	Passed	
Slice Thickness Offset - A (mm)	-0.25	-0.25	0.00	Passed	
Slice Thickness Offset - B (mm)	0.75	0.75	0.00	Warning	
Geometric distortion (mm)	0.53	0.53	0.00	Passed	
Spatial resolution (lp/cm)	6.9	6.9	0.0	Passed	
Uniformity (HU)	-2.8	-2.80	0.00	Passed	
Contrast (HU)	5.94	5.94	0.00	Passed	
Contrast To Noise Ratio (units)	1.56	1.56	0.00	Passed	
Noise (units)	5.22	5.22	0.00	Passed	
Air (HU)	-992.15	-992.16	0.01	Passed	
Acrylic (HU)	122.69	122.69	0.00	Passed	
Bone (HU)	900.32	900.32	0.00	Passed	
Water (HU)	2.35	2.35	0.00	Passed	
Polyethylene (HU)	-89.16	-89.16	0.00	Passed	

Machine: GE1

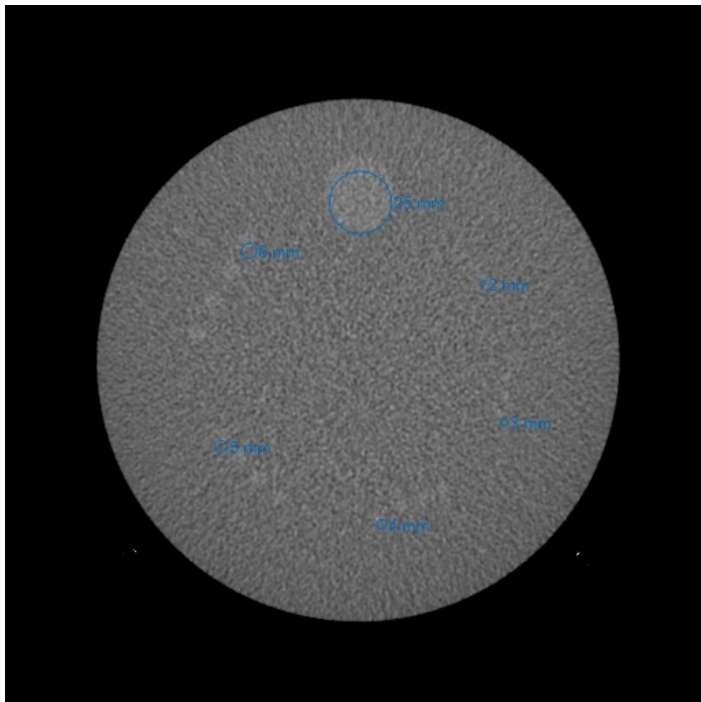
Test Date: 15 AUG 2014

Task Name: CT (2)

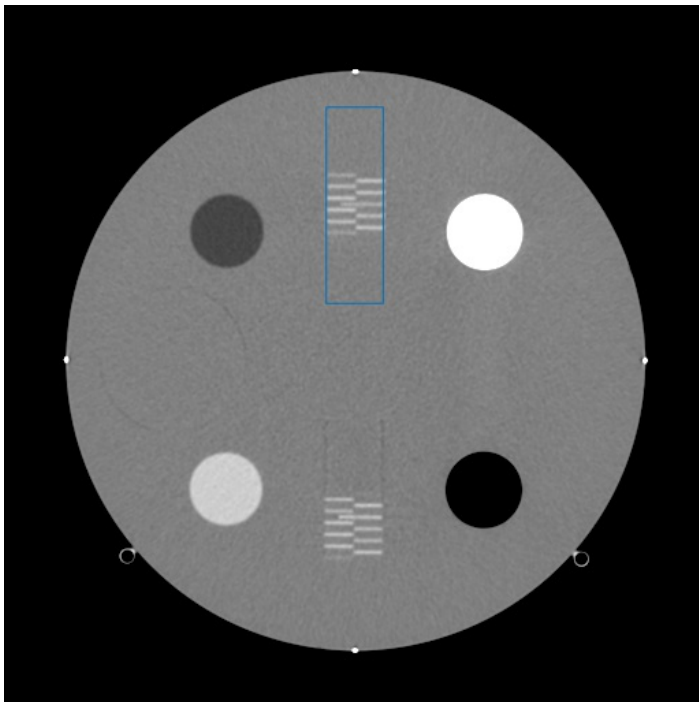
Status: Warning: Review Needed

Images

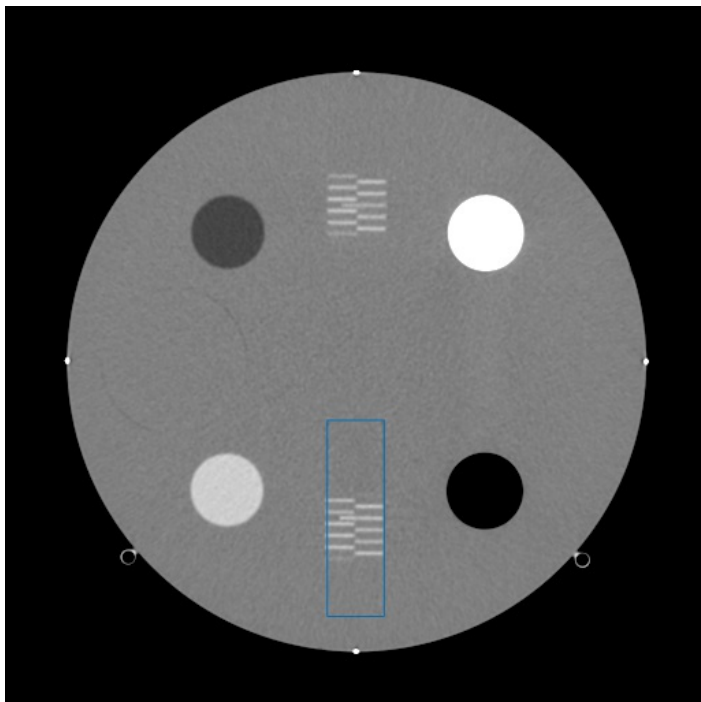
Low Contrast



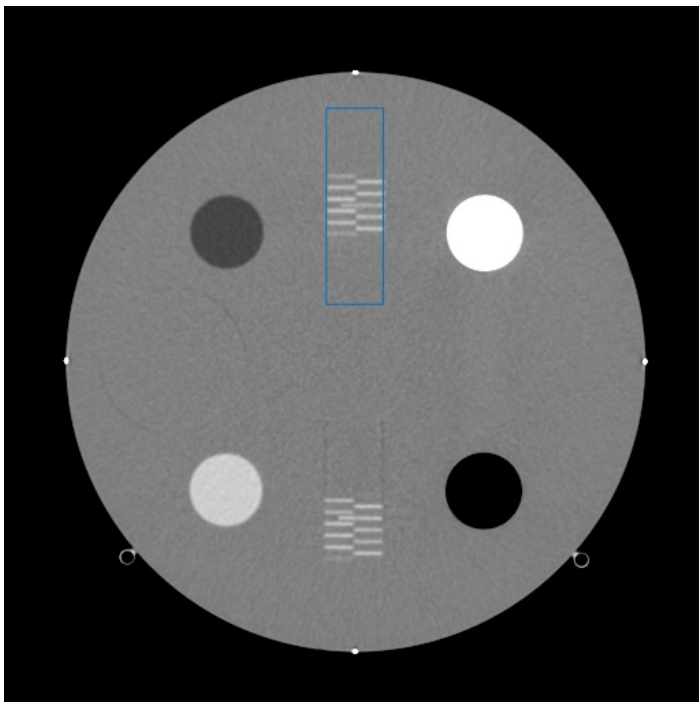
Slice Thickness - A



Slice Thickness - B



Slice Thickness Offset - A



Machine: GE1

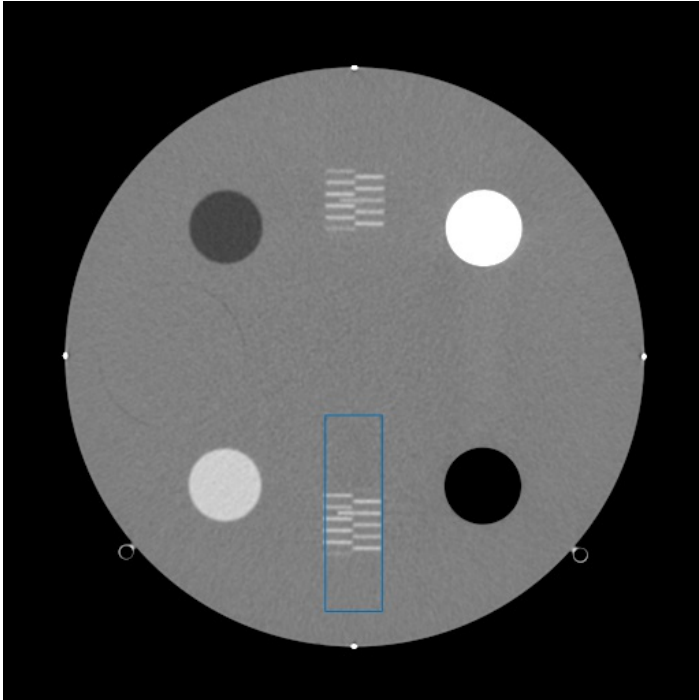
Test Date: 15 AUG 2014

Task Name: CT (2)

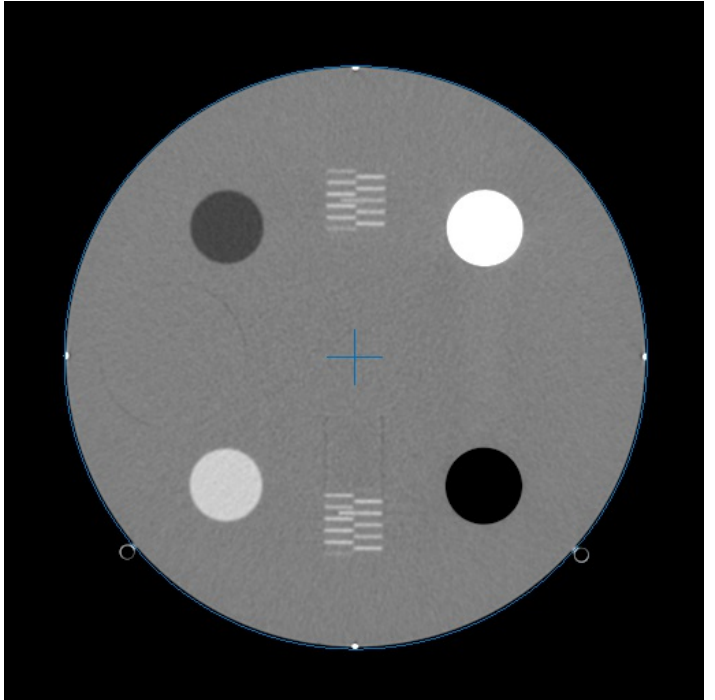
Status: Warning: Review Needed

Images

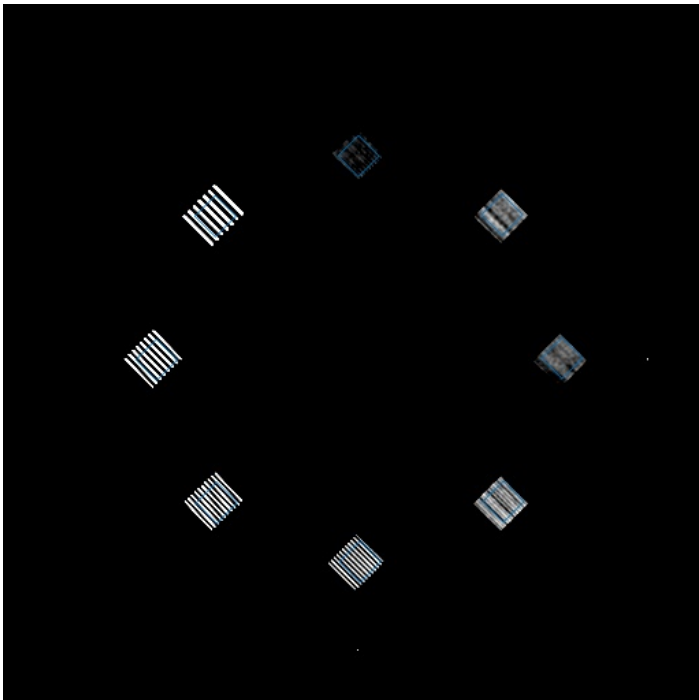
Slice Thickness Offset - B



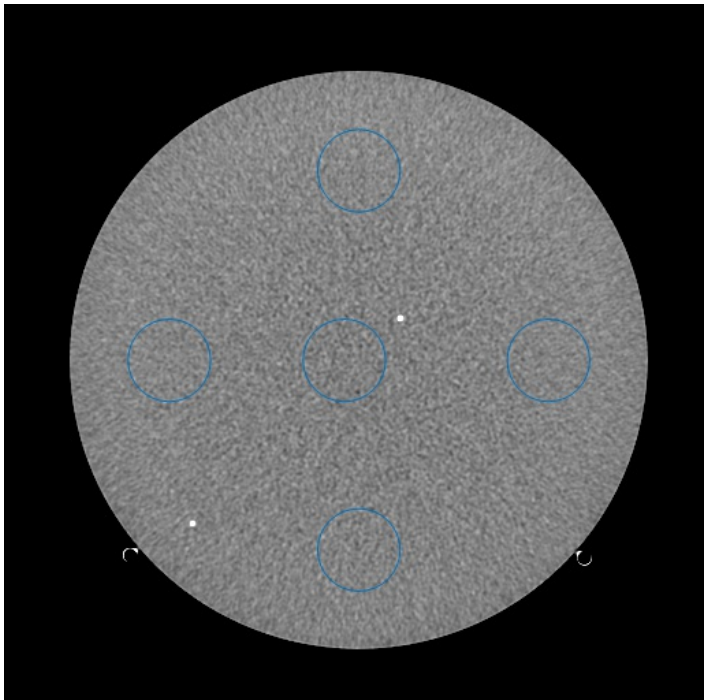
Geometric distortion



Spatial resolution



Uniformity



Machine: GE1

Test Date: 15 AUG 2014

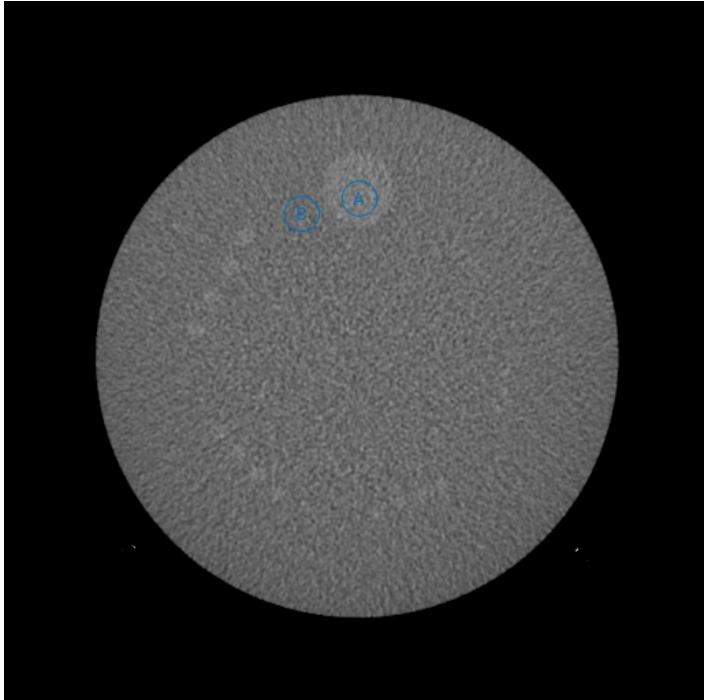
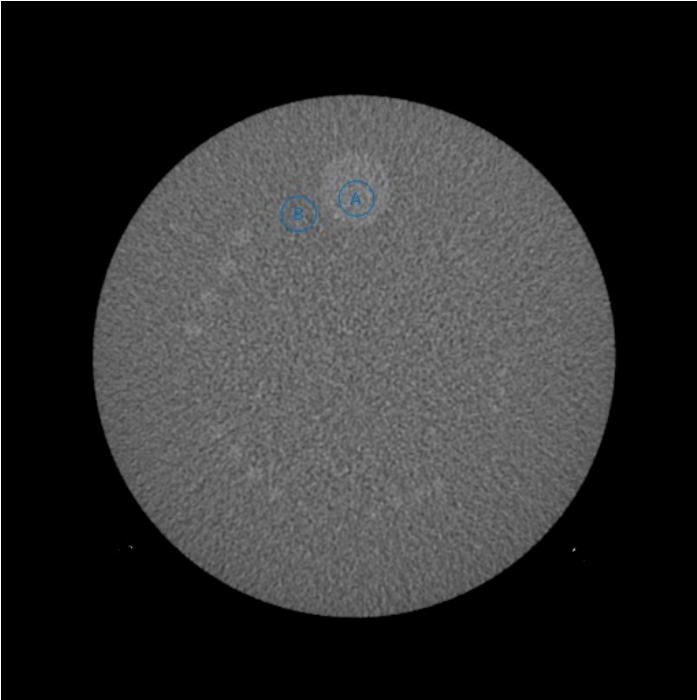
Task Name: CT (2)

Status: Warning: Review Needed

Images

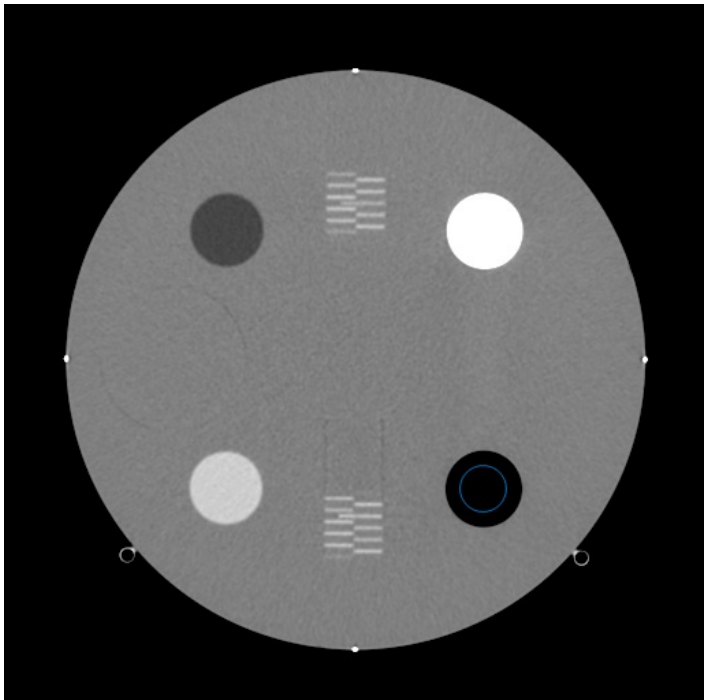
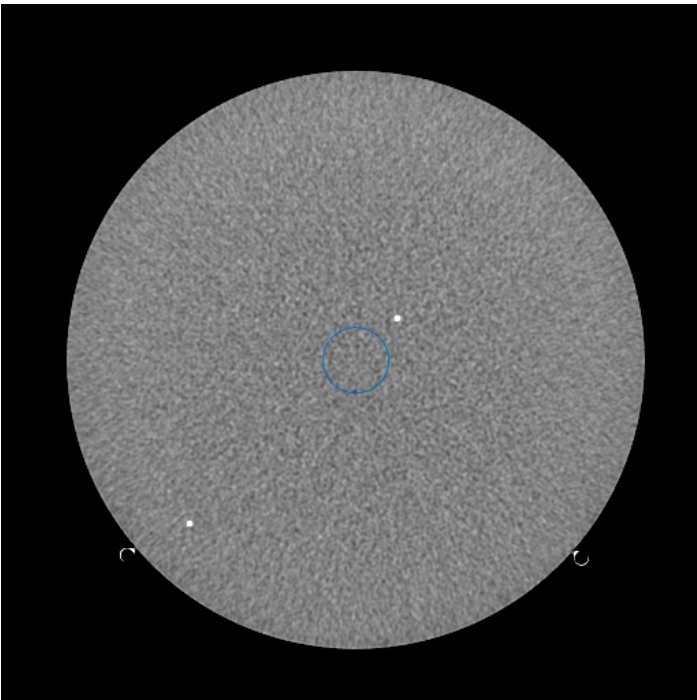
Contrast

Contrast To Noise Ratio



Noise

Air



Machine: GE1

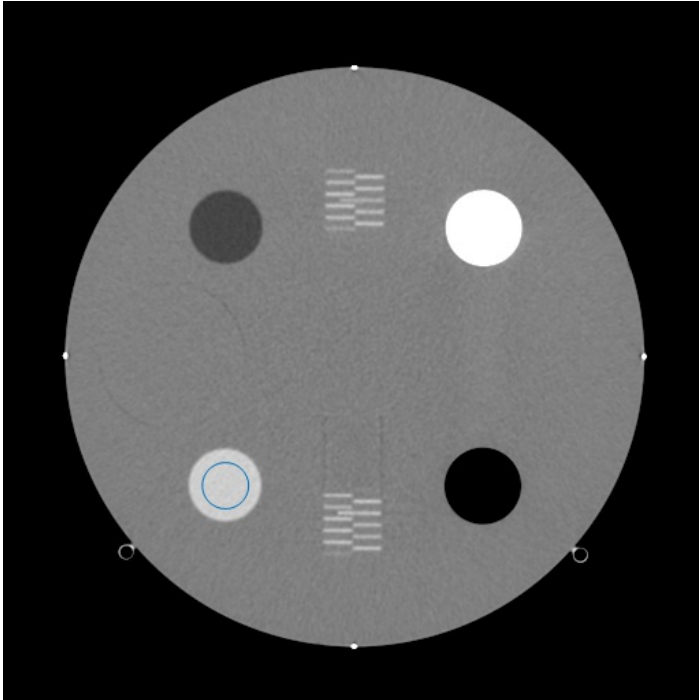
Test Date: 15 AUG 2014

Task Name: CT (2)

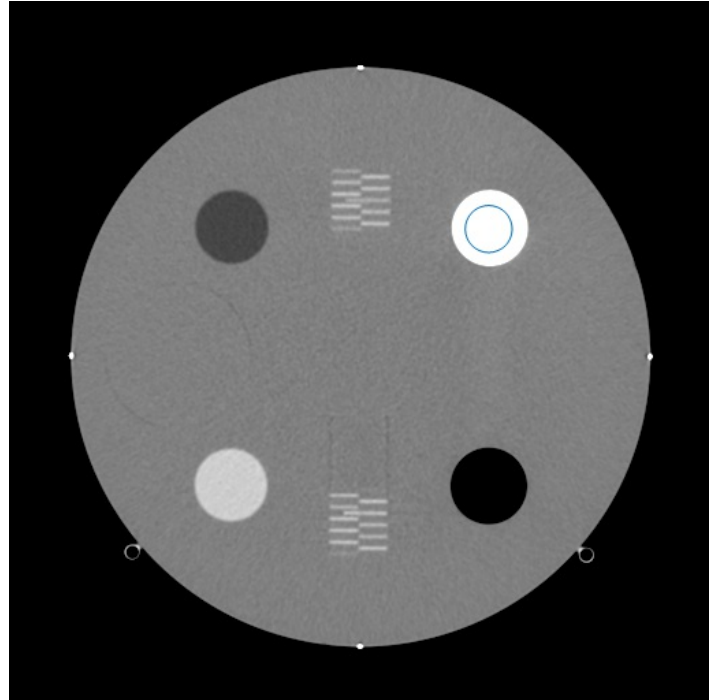
Status: Warning: Review Needed

Images

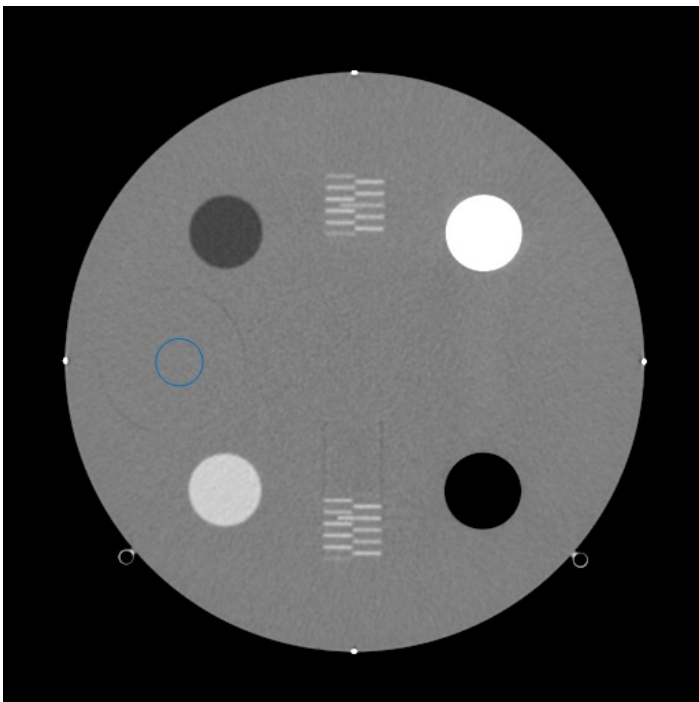
Acrylic



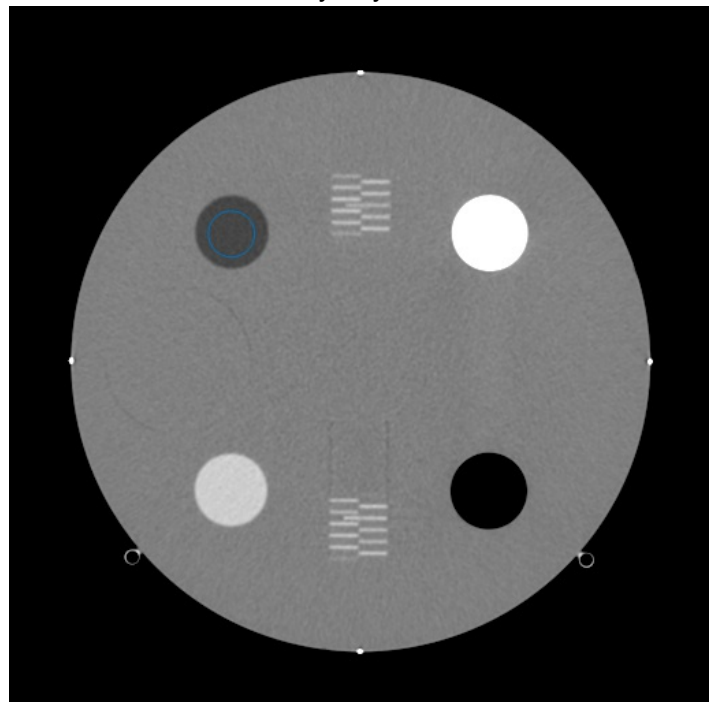
Bone



Water



Polyethylene



Task Report

Machine: GE1

Test Date: 15 AUG 2014

Task Name: CT (2)

Status: Warning: Review Needed

Comments

No comments currently available.