



# A WIDE SET OF DXA CLINICAL APPLICATIONS

## BASIC BONE

### AP Spine

Provides an estimate of BMD for the lumbar spine.

### Forearm

Provides an estimate of BMD for different regions of interest (Radius 33%, Radius UD, Total Radius plus Ulna). Seated or supine options.

### Femur/Dual Femur

Provides an estimate of proximal femur BMD for one or both femurs in one scan.

### ScanCheck

A 34-point check system that provides advanced analysis of spine, femur, forearm and total body abnormalities, with alerts for abnormalities (including high density areas, high spine curvature, unusual T-score and many more).

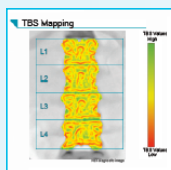
### FRAX® Fracture Risk Tool<sup>1</sup>

Provides estimates of 10-year probability of both hip fracture and a major osteoporotic fracture for ages 40-90 years.

### Dual-energy Vertebral Assessment (DVA)

Both LVA and APVA in one scan to identify deformities and estimate vertebral heights. Lateral Spine provides a lumbar spine BMD estimate.

## ADVANCED BONE



### Trabecular Bone Score – Integrated TBS<sup>2</sup>

Provides TBS score based on assessment of trabecular region of bone, including FRAX-adjusted TBS. Includes TBS license. Complimentary 60-day TBS software trial program available for new TBS customers.

### Pediatrics

Total body scan for BMD, BMC, fat and lean mass for patients from birth to 20 years; optional spine and femur measurements.

### Hand Measurement

Complete acquisition of the hand with automated TOTAL ROI and customs analysis.

### Orthopedic Knee

Provides an estimate of bone mineral density around knee implants pre- and post-surgery.

### Orthopedic Hip

Provides an estimate of bone mineral density around hip implants and visualizes 7 or 19 Gruen zones.

### Atypical Femur Fracture (AFF)

Image of the entire femur with quantitative measurements to identify areas of focal thickening along the lateral cortex.

### Spine Geometry

Lateral and anterior views of the spine with soft tissue equalization to assess spinal curvature using Cobb angles.

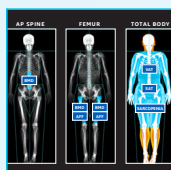
### Small Animal Body Scan

For research use on laboratory animals and other non-human subjects.

### Advanced Hip Analysis

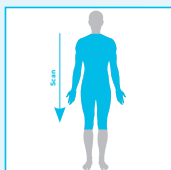
Measures the Hip Axis Length (HAL), the upper neck femoral BMD for prediction of femoral neck fracture risk and FSI using CSA, CSMI for improved patient fracture evaluation. Provided with HAL reference data.

## TOTAL BODY



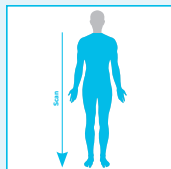
### DXAVision™

Provides one unified workflow and comprehensive reporting for BMD, AFF, VAT and SAT.<sup>3</sup> Designed to improve operator efficiency with a scan time up to 40% faster.<sup>4</sup> Includes Total Body and Smaller Body (ROI) Composition, Total Body Less Head (TBLH) and Neck-to-Knee for Adults.



### Neck-to-Knee for Adults<sup>5</sup>

Performs a faster scan by omitting head and lower legs, providing an estimate of total body composition.



### Total Body Less Head (TBLH) for Adults<sup>6</sup>

Including the skull can mask changes occurring in other areas of the skeleton; this tool automatically performs a scan from the neck down. Can also get TBLH results for scans with the head included.

### Total Body BMD

Provides an estimate of total body BMD, plus regional results and trending. Generates Z- and T-scores based on selected reference population.

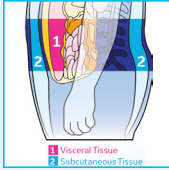
### Total Body Composition

Provides lean and fat tissue composition in grams and %fat. Total and regional Body Composition, Android and Gynoid ROI, plus body composition trending. BMI plotted with WHO criteria for Obesity; trend graph. Color Fat Mapping (iDXA only).

### Mirror-Image Scan<sup>7</sup>

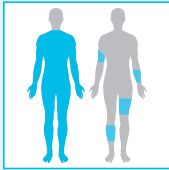
Estimate total body composition and BMD for patients that exceed width of scan window.

## ADVANCED BODY



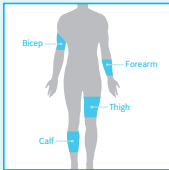
### CoreScan with VAT and SAT Results<sup>1</sup>

CoreScan estimates Visceral and Subcutaneous Adipose Tissue (VAT and SAT) mass and volume within the android region. Values can be displayed in user-defined statistical formats and trends.



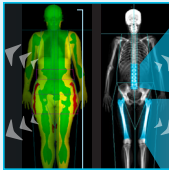
### Sports Athletics Package

Includes TBLH (Total Body Less Head) for Adults and Smaller Body Comp – ROI to easily scan and report on specific Regions of Interest. Facilitates study of changes in body composition.



### Smaller Body Composition (Regions of Interest)<sup>6</sup>

Monitor and report on Regions of Interest (ROI) including upper arm, lower arm, upper leg and lower leg, to study changes in body composition in these regions.



### Advanced Analytics

Provides deep BMD and Body Composition insights with custom equations, metrics and ratios based on 200+ DXA bone and body composition parameters. User-defined classification thresholds, trending and reporting.



### Customizable Thresholds (AFF and VAT)<sup>8,9,10</sup>

Enables setting of custom thresholds to search for correlations: between "beaking" and the probability of AFF, and between VAT and the probability of metabolic disorders.

### Advanced Body Composition

Tools to help patients understand impact of diet, lifestyle and exercise on health and performance. Color Coding of Body Composition (lean, fat and bone distribution) images. Metabolic results include RMR, RSMI and hydration levels (manual entry) for TBW, ICW, ECW, Advanced Composer style sheets. Color mapping tool to set threshold adjustments to fat% (Lunar iDXA™ only).

### Sarcopenia<sup>2</sup>

Calculates Sarcopenia values based on 6 published definitions and thresholds using measured appendicular lean mass along with collected patient data.

## PRODUCTIVITY APPS



### Composer Reporting

Provides default style sheets, which can be edited using an intuitive WYSIWYG interface to quickly produce customized reports and templates.

#### OneScan

Performs an AP Spine and Dual Femur exam without repositioning between scans.

#### Quick View

Provides a spine or femur scan in just 10 seconds.

#### OneVision

Set up multiple measurements within a single exam, allowing users to reduce keystrokes and improve patient throughput.

#### Multi-User Database

Enables full data SQL for multiple users to share a database between multiple systems and view patient exams remotely. Software and license up to 40 users.

#### Practice Management

Provides general purpose tools for patient population reporting and subsequent patient visit follow-up.

## DATA AND SECURITY

### Advanced Security (DoD RMF)

Advanced cybersecurity features that meet U.S. Department of Defense Risk Management (DoD RMF) requirements.

### Custom Reference Population

Can create a custom reference population that can be compared to your patients' results.

<sup>1</sup> Not available in Japan. <sup>2</sup> Consult for market availability. <sup>3</sup> Requires purchase of AFF application and Corescan (for VAT and SAT) application.

<sup>4</sup> Data on file with GE Healthcare, April 2019. <sup>5</sup> Requires DXAVision. <sup>6</sup> Requires DXAVision or Sports Athletics Package. <sup>7</sup> Requires Total Body Comp or Total Body BMD. <sup>8</sup> Requires Advance Analytics. <sup>9</sup> Customizable Threshold for AFF requires AFF Application. <sup>10</sup> Customizable Threshold for VAT requires CoreScan application.

© 2019 General Electric Company – All rights reserved.

GE Healthcare reserves the right to make changes in specifications and features shown herein, or discontinue the product described at any time without notice or obligation. Contact your GE Healthcare representative for the most current information. GE, the GE Monogram, Lunar iDXA, and DXAVision are trademarks of General Electric Company. GE Healthcare, a division of General Electric Company. GE Medical Systems, Inc., doing business as GE Healthcare. FRAX is a registered trademark of the World Health Organization Collaborating Centre for Metabolic Bone Diseases, University of Sheffield, UK. All other third party trademarks are the property of their respective owners.

June 2019 JB68166US

